

STRATEGIC CLIMATE ACTION PLAN



WHAT KING COUNTY IS DOING

*to reduce greenhouse gas emissions and
prepare for the impacts of climate change*

How the Pacific Northwest is preparing for the impacts of climate change

Councilmember Larry Phillips

Chair, King County Council
King County Council District 4

July 29, 2014

Outline

- ✓ Climate change impacts in Puget Sound area
- ✓ King County's Strategic Climate Action Plan & Washington State Executive Order on Climate
- ✓ Preparing for climate change impacts—local and national implications



Puget Sound Climate Impacts



WHAT RELATED IMPACTS ARE HAPPENING IN OUR REGION?

CLIMATE CHANGE IS AFFECTING OUR ENVIRONMENT, ECONOMY AND HUMAN HEALTH.

OCEANS

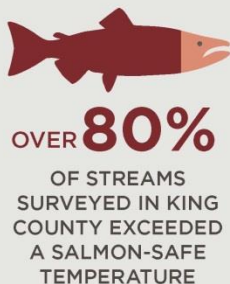
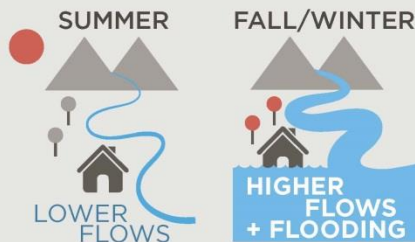
OCEAN WATER



PUGET SOUND



RIVERS



FLOODING HAS CLOSED



MOUNTAINS

AVERAGE CASCADE SNOWPACK



Climate Risks for the Future



WHAT IS THE RISK FOR OUR REGION IN THE FUTURE?

IF WE DON'T ACT NOW, THE COSTS AND CONSEQUENCES WILL GROW.*

OCEANS



MARINE-BASED ECONOMIES

SUFFER AS

FISH/SHELLFISH DIMINISH



RIVERS & STORMS



INCREASE IN SEVERE STORMS

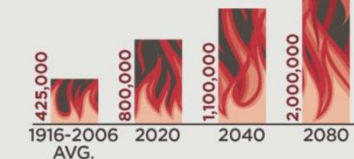


MOUNTAINS

AVERAGE WASHINGTON
SNOWPACK



PNW ACRES BURNED BY
WILDFIRES
EVERY YEAR



King County's Response to Climate Change

- ✓ February 2012: King County Council required the Executive to develop a Strategic Climate Action Plan by June 2012



King County's Response to Climate Change Dual Focus

The Plan addresses both:

- ✓ Reducing GHG emissions from County operations and government services
- ✓ Preparing for climate change impacts



Five Goal Areas

1. Transportation and Land Use
2. Energy
3. Forests and Agriculture
4. Consumption and Materials Management
5. Preparing for Climate Change Impacts



Preparing for Climate Change

- ✓ **Services:** Work with local cities and other partners to prepare for the effects of climate change on the environment, human health and the economy
- ✓ **Operations:** Plan and prepare for the likely impacts of climate change on County-owned facilities, infrastructure and natural resources



Mitigating Flood Risks

- ✓ **Strategy:** Mitigate flood risks by implementing the King County Flood Hazard Management Plan
- ✓ **2007: King County Flood Control District** established



Cedar Grove Mobile Home Park prior to buyout and resident relocation

Preparing County Facilities

- ✓ **Strategy:** Inventory County facilities and infrastructure subject to climate change impacts such as flooding and inundation from sea level rise, and develop strategies for reducing risks and mitigating damages



Severe Weather Emergencies

- ✓ Volatile weather means increased risk of flooding, landslides, and other emergencies
- ✓ While severe weather and FEMA incidents are increasing, funding for emergency preparedness is dwindling



Wildfires and Fire Safety

- ✓ Higher temperatures and volatile weather increase fire risk
- ✓ King County has worked to preserve and protect forest land
- ✓ County's Forestry Program also helps rural communities to develop fire safety plans



Domestic Climate Refugees?

- ✓ Climate change impacts have caused refugees in other regions of the world
- ✓ Pacific Northwest attractive destination for domestic climate change refugees



Local Governments and National Security

- ✓ Local governments are the first responders to climate change impacts
- ✓ Multiplying impacts due to climate change strain local and national resources
- ✓ Barrage of local climate emergencies threatens national security



STRATEGIC CLIMATE ACTION PLAN



WHAT KING COUNTY IS DOING

*to reduce greenhouse gas emissions and
prepare for the impacts of climate change*

Learn more

www.kingcounty.gov/climate

Many thanks to King County's Climate Change Action Team

Contact: Matt Kuharic, Climate Change Program Coordinator